

## Royal Blackburn Hospital Emergency Department and Urgent Care Centre and Burnley General Hospital Urgent Care Centre

### Monthly Bulletin: October 2011 to September 2012

This bulletin provides a breakdown of all injury attendances to the Royal Blackburn Hospital Emergency Department (ED) and Urgent Care Centre (UCC), and Burnley General Hospital UCC between October 2011 and September 2012.

Between October 2011 and September 2012 there were 68,808 ED and UCC attendances. The month with the highest attendance was May with 6,508 attendances (**Figure 1**). There were more male than female attendances presenting at the ED and UCCs (males=37,058; 54%).

**Figure 2** shows the age group of ED and UCC attendances for each month. Over a third (34%) of ED and UCC attendances were aged 30-59 (n=23,226) and 30% were 15-29 years old (n=20,579).

**Table 1** illustrates the source of referral of ED and UCC attendances. Self-referral (31%) was the main referral source. This was followed by brought in by others (29%), brought in by parent (22%) and brought in by ambulance (14%).

**Table 2** details the injury group of ED and UCC attendances. The majority (87%) of injury attendances were recorded as other injury. Sports injury accounted for 5% of attendances, road traffic collisions (RTC) 5% and assaults 3%.

The discharge destination of all injury attendances to the ED and UCCs is displayed in **Table 3**. Almost four in ten (39%) attendances were discharged and required no follow-up treatment, while 14% were discharged to their GP.

#### Assault attendances

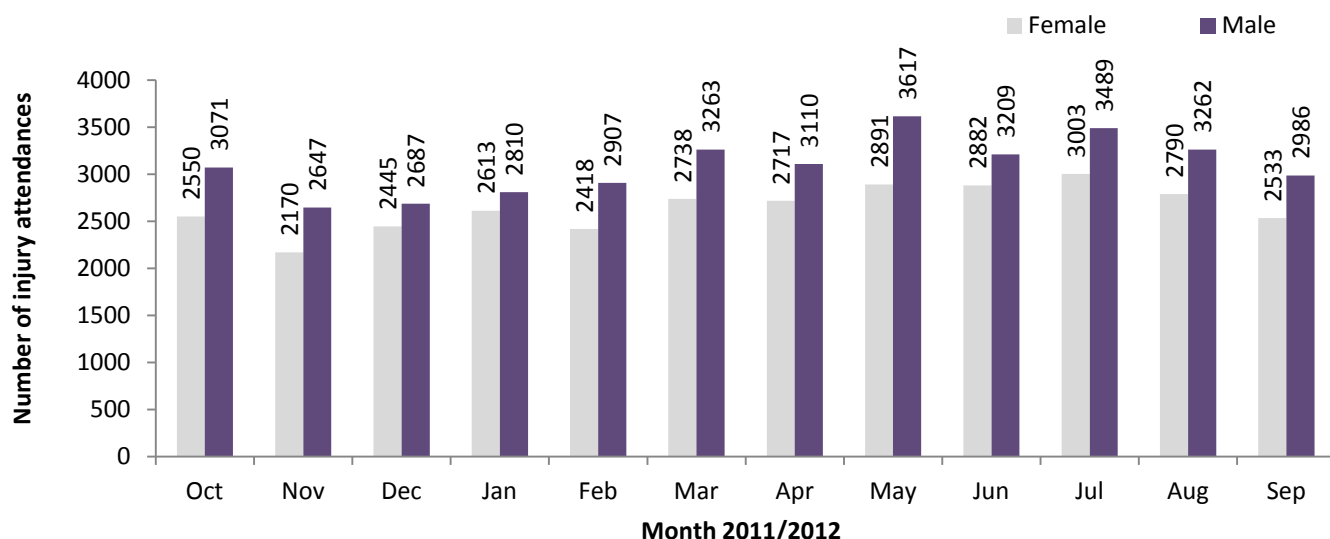
Between October 2011 and September 2012 there were 2,110 assault attendances to the ED and UCCs. The month with the highest attendance was October with 214 attendances (**Figure 3**). There were more male than female assault attendances presenting at the ED and UCCs (males=1,582; 75%).

**Table 4** details the age group of assault attendances for each month. The majority of ED and UCC assault attendances were aged 15-29 (n=1,151; 55%) and 39% were 30-59 years old (n=824).

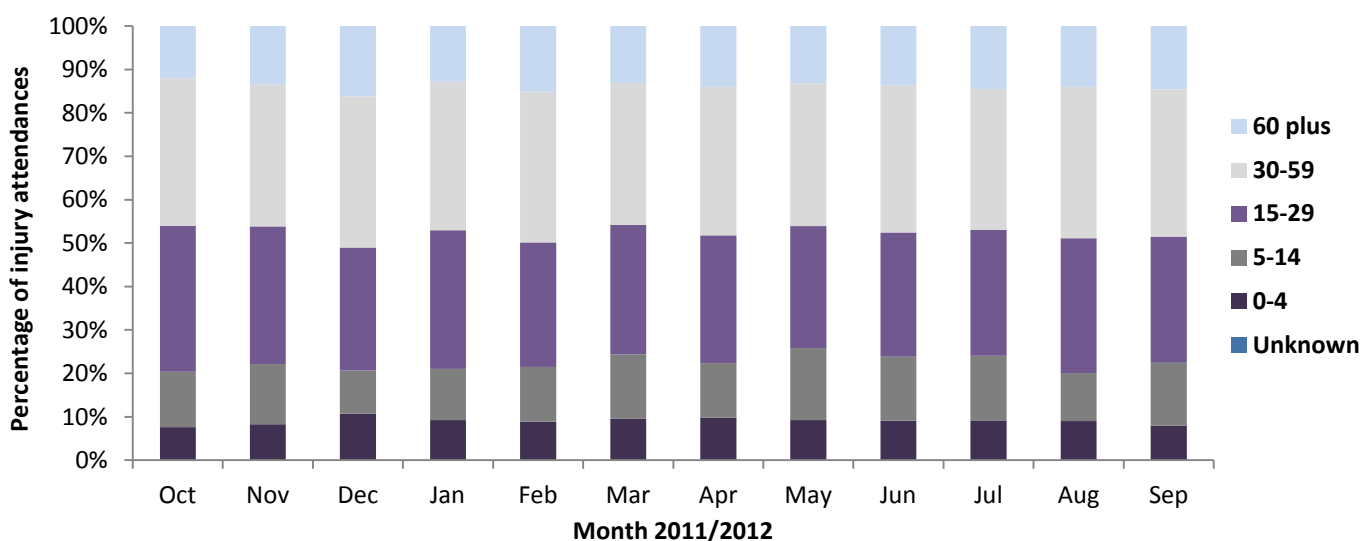
**Table 5** illustrates the source of referral for assault attendances to the ED and UCCs. The primary source of referral for assault attendances was by ambulance (36%). Almost a quarter (24%) were self-referred and over a fifth (23%) were brought in by others.

**Table 6** depicts the general discharge destination of assault attendances to the ED and UCCs. The majority of the attendances were discharged (46%), 31% required follow-up treatment and 12% were admitted.

**Figure 1: Gender of ED and UCC injury attendances by month, October 2011 to September 2012**



**Figure 2: ED and UCC injury attendances by age group and month, October 2011 to September 2012**



**Table 1: ED and UCC injury attendances by source of referral and month, October 2011 to September 2012<sup>1,2</sup>**

Source of referral	Oct	Nov	Dec	Jan	Feb	Mar	Apr	May	Jun	Jul	Aug	Sep	Total	%
Self-referral	1807	1586	1671	1900	1675	2026	1896	2012	1910	1824	1767	1574	21648	31
Brought in by others	1656	1328	1396	1499	1542	1503	1572	1691	1799	2041	2024	1755	19806	29
Brought in by parent	1167	1114	1080	1169	1162	1481	1285	1679	1412	1508	1164	1176	15397	22
Ambulance	809	634	813	710	761	790	840	857	780	918	894	813	9619	14
Other	34	53	49	42	59	56	107	99	66	29	69	43	706	1
Police	39	39	33	36	56	46	47	59	41	62	60	55	573	1
GP request	45	34	30	29	28	39	29	48	30	37	28	50	427	1
Sent by others	39	18	39	22	26	31	30	40	32	34	14	28	353	1
Direct referral	12	8	11	7	9	9	11	10	10	19	12	9	127	0
ED staff	10	***	7	8	<7	16	7	10	10	15	17	16	124	0
Staff health	***	***	***	***	***	***	***	***	***	***	***	***	17	0
Emergency call	***	***	***	***	***	***	***	***	***	***	***	***	9	0
ED follow-up	***	***	***	***	***	***	***	***	***	***	***	***	***	0
Consultant	***	***	***	***	***	***	***	***	***	***	***	***	***	0
Unknown	***	***	***	***	***	***	***	***	***	***	***	***	***	0
<b>Total</b>	<b>5621</b>	<b>4817</b>	<b>5132</b>	<b>5423</b>	<b>5325</b>	<b>6001</b>	<b>5827</b>	<b>6508</b>	<b>6091</b>	<b>6492</b>	<b>6052</b>	<b>5519</b>	<b>68808</b>	<b>100</b>

<sup>1</sup> Please note that all numbers less than five have been suppressed (with \*\*\*) in line with patient confidentiality and if there is only one number less than five in a category then two numbers will be suppressed to prevent back calculations from totals.

<sup>2</sup> GP=general practitioner.

**Table 2: ED and UCC injury attendances by injury group and month, October 2011 to September 2012**

Injury group	Oct	Nov	Dec	Jan	Feb	Mar	Apr	May	Jun	Jul	Aug	Sep	Total	%
Other injury	4653	4071	4418	4785	4668	5183	5060	5674	5361	5788	5336	4750	59747	87
Sports injury	345	289	172	212	279	391	328	388	289	224	245	292	3454	5
RTC	377	257	340	233	239	239	275	230	241	269	248	260	3208	5
Assault	214	178	178	177	123	169	140	192	169	188	192	190	2110	3
Deliberate self-harm	32	22	24	16	16	19	24	24	31	23	31	27	289	0
<b>Total</b>	<b>5621</b>	<b>4817</b>	<b>5132</b>	<b>5423</b>	<b>5325</b>	<b>6001</b>	<b>5827</b>	<b>6508</b>	<b>6091</b>	<b>6492</b>	<b>6052</b>	<b>5519</b>	<b>68808</b>	<b>100</b>

**Table 3: ED and UCC injury attendances by discharge destination and month, October 2011 to September 2012<sup>3,4,5</sup>**

Discharge destination	Oct	Nov	Dec	Jan	Feb	Mar	Apr	May	Jun	Jul	Aug	Sep	Total	%
Discharged no follow-up	2393	2038	1893	2082	2076	2291	2276	2486	2140	2553	2411	2272	26911	39
BGH discharge to GP within unit BGH	477	406	899	783	801	911	977	972	1046	1042	1022	465	9801	14
Discharged to GP	778	748	711	810	676	764	661	886	939	810	769	789	9341	14
Clinic-fracture/orthopaedic	524	493	438	452	495	578	473	611	538	574	450	514	6140	9
RBH discharge to GP within unit RBH	356	296	283	407	317	323	400	313	288	321	295	334	3933	6
Left before treatment	373	239	243	246	301	314	273	407	319	317	323	337	3692	5
Admitted to ward	252	205	256	247	241	293	271	293	293	319	296	281	3247	5
Left refusing treatment	114	102	85	64	98	130	118	150	167	143	141	117	1429	2
GP treatment room	143	91	113	110	110	128	124	102	132	129	82	110	1374	2
Clinic other	85	58	65	72	68	97	82	95	77	88	94	87	968	1
Unknown	***	7	63	53	51	57	62	70	61	75	70	125	694	1
Clinic-ear/nose/throat	28	31	31	41	34	41	40	24	36	47	26	32	411	1
Other hospital	40	37	19	16	18	18	24	35	17	35	26	14	299	0
Clinic-ophthalmology	11	24	7	18	14	27	24	24	17	16	21	18	221	0
Clinic-oral/dental surgery	11	7	6	8	9	11	11	16	11	9	11	10	120	0
Other	8	8	11	7	***	9	***	11	***	6	7	5	82	0
Community/district nurse	***	5	5	***	6	6	***	7	***	***	***	***	50	0
Died in department	***	***	***	***	***	***	***	***	***	***	5	***	25	0
Admitted to theatre	***	***	***	***	***	***	***	***	***	***	***	***	24	0
Site transfer from BGH UCC to RBH UCC	9	14	***	***	***	***	***	***	***	***	***	***	23	0
Site transfer from BGH to RBH ED	8	7	***	***	***	***	***	***	***	***	***	***	15	0
Dead on arrival	***	***	***	***	***	***	***	***	***	***	***	***	7	0
Site transfer from ED RBH to UCC BGH	***	***	***	***	***	***	***	***	***	***	***	***	***	0
Site transfer from ED RBH to UCC RBH	***	***	***	***	***	***	***	***	***	***	***	***	***	0
Site transfer from RBH UCC to RBH ED	***	***	***	***	***	***	***	***	***	***	***	***	***	0
<b>Total</b>	<b>5621</b>	<b>4817</b>	<b>5132</b>	<b>5423</b>	<b>5325</b>	<b>6001</b>	<b>5827</b>	<b>6508</b>	<b>6091</b>	<b>6492</b>	<b>6052</b>	<b>5519</b>	<b>68808</b>	<b>100</b>

<sup>3</sup> RBH=Royal Blackburn Hospital and BGH=Burnley General Hospital.

<sup>4</sup> Clinic other includes: trauma clinic, dressing clinic, GUM clinic, medicine and diabetic clinic and dermatology/plastic surgery clinic. Other includes: residential home, police custody, other and referred to own dentist. Other hospital includes: other hospital and emergency hospital transfer.

<sup>5</sup> Please note percentages might not add to one hundred due to rounding.

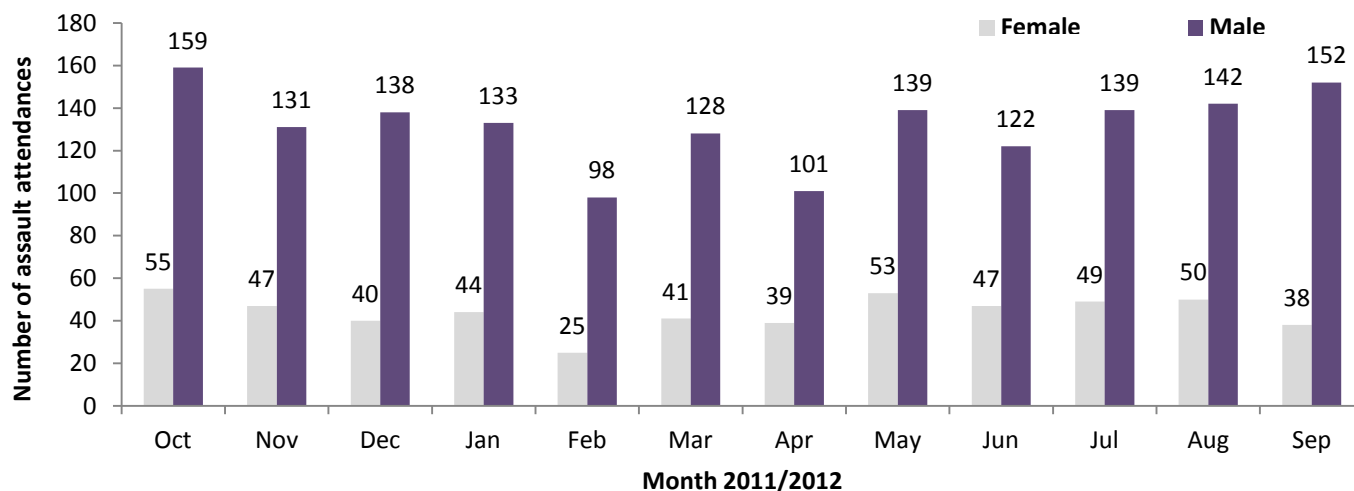
## Assaults

**Table 4: ED and UCC assault attendances by age group and month, October 2011 to September 2012\***

Age group	Oct	Nov	Dec	Jan	Feb	Mar	Apr	May	Jun	Jul	Aug	Sep	Total	%
0-4	***	***	***	***	***	***	***	***	***	***	***	***	***	0
5-14	12	5	***	7	***	9	***	11	7	8	***	8	82	4
15-29	116	92	84	104	70	99	81	102	99	100	98	106	1151	55
30-59	83	74	84	62	48	59	55	73	59	71	86	70	824	39
60 plus	***	<8	5	***	***	***	***	<7	***	<8	5	<7	<50	2
<b>Total</b>	<b>214</b>	<b>178</b>	<b>178</b>	<b>177</b>	<b>123</b>	<b>169</b>	<b>140</b>	<b>192</b>	<b>169</b>	<b>188</b>	<b>192</b>	<b>190</b>	<b>2110</b>	<b>100</b>

\*There was one attendance where age group was unknown; this has been included in the total figure.

**Figure 3: Number of ED and UCC assault attendances by gender and month, October 2011 to September 2012**



**Table 5: ED and UCC assault attendances by source of referral and month, October 2011 to September 2012**

Source of referral	Oct	Nov	Dec	Jan	Feb	Mar	Apr	May	Jun	Jul	Aug	Sep	Total	%
Ambulance	69	56	69	65	42	70	60	76	52	67	60	69	755	36
Self-referral	59	50	34	42	34	33	31	47	42	41	47	41	501	24
Brought in by others	47	47	47	45	23	35	28	35	48	38	51	45	489	23
Brought in by parent	21	15	8	10	9	19	7	17	14	14	12	14	160	8
Police	12	9	11	11	12	7	11	12	8	18	15	18	144	7
Other	***	***	5	***	***	***	***	***	***	***	5	***	31	1
ED staff	***	***	***	***	***	***	***	***	***	***	***	***	9	0
Sent by others	***	***	***	***	***	***	***	***	***	***	***	***	9	0
Direct referral	***	***	***	***	***	***	***	***	***	***	***	***	5	0
GP request	***	***	***	***	***	***	***	***	***	***	***	***	5	0
Consultant	***	***	***	***	***	***	***	***	***	***	***	***	***	0
Emergency call	***	***	***	***	***	***	***	***	***	***	***	***	***	0
Staff health	***	***	***	***	***	***	***	***	***	***	***	***	***	0
Unknown	***	***	***	***	***	***	***	***	***	***	***	***	***	0
<b>Total</b>	<b>214</b>	<b>178</b>	<b>178</b>	<b>177</b>	<b>123</b>	<b>169</b>	<b>140</b>	<b>192</b>	<b>169</b>	<b>188</b>	<b>192</b>	<b>190</b>	<b>2110</b>	<b>100</b>

**Table 6: ED and UCC assault attendances by discharge destination and month, October 2011 to September 2012**

Discharge destination	Oct	Nov	Dec	Jan	Feb	Mar	Apr	May	Jun	Jul	Aug	Sep	Total	%
Discharged	108	88	69	75	46	76	67	82	75	89	107	86	968	46
Follow-up	69	63	59	48	46	54	46	57	54	60	43	59	658	31
Admitted	22	13	26	32	14	17	16	27	21	23	23	23	257	12
Other	15	14	24	22	17	22	11	26	19	16	19	22	227	11
<b>Total</b>	<b>214</b>	<b>178</b>	<b>178</b>	<b>177</b>	<b>123</b>	<b>169</b>	<b>140</b>	<b>192</b>	<b>169</b>	<b>188</b>	<b>192</b>	<b>190</b>	<b>2110</b>	<b>100</b>

Published January 2013

Johnathan Rooney (TIIG Officer), Val Upton (Senior Public Health Researcher / Analyst)  
 Centre for Public Health, Liverpool John Moores University, 2nd Floor, Henry Cotton Campus,  
 Liverpool, L3 2ET  
 Tel: 0151 231 4539 Email: j.rooney@ljmu.ac.uk